

SHICO. COMBINED PCO NON FLOW SWITCH

MODEL : SVFLST Series

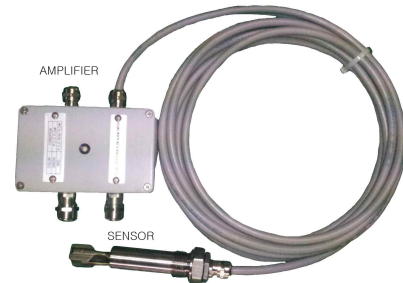
(VIBRATION & TEMPERATURE OUTPUT)

PRINCIPLE OF OPERATION

A specially shaped tuning fork is kept vibrating by piezo electric elements.

The frequency of the fork changes when the tines are immersed in the liquid and change in the frequency is detected and used for switching a relay.

And Included Rtd sensor is be measured temperature precisely. The output contacts of the relay can in turn be used for warning or control.



■ APPLICATIONS

Combined type non flow Switch can be used for all type of liquids in storage tanks, mixing tanks and pipe lines having. In addition, Fluid fork is suitable for most of the applications where float switches were previously used and for liquids, which are sticky, corrosive, agitated, splashing and forming.

■ FEATURE

- Single-point control
- Adjustable switching delay for fork covered / uncovered
- Electronics remote, wall / back panel mounting
- Flame-proof version for hazardous areas
- Adjustable insertion length version

■ USAGE

Level tester SVFLST Series of level switches are successfully used in progressing plants for liquids having viscosity up to 10,000 cP in Food, Power, chemicals, sugar, Detergents, Steel, Minerals, Textiles etc. It has also replaced the float operated switches in some of the applications. In additionally, it is not affected by electrical properties of the service material.

■ SPECIFICATION

■ Flow & Temp Sensor

Protection	IP67
Operating Temp'	-20~80℃
RTD Measuring Range	-20~150℃
Temperature Sensor element	RTD 3 Wire type (Class B)
Housing Material	SUS304

■ Combined AMP Box

LED Flashing State	Flow (Green), Non Flow(Red)
Flow Switch Contact	RELAY CONTACT : 2SPDT, DPDT
Input Power	DC24V
Current Consumption	Max, 70mA
Temperature Output Signal	PT100Ω
Housing Material	Aluminum, Die Casting



SAM HOI INDUSTRIAL CO., LTD.

#48-2, 66-BeonGil, Golden root-Ro, Juchon Myeon, Gimhae-city

Gyeongnam-do. Korea

Tel. +82-55-321-0578~9 Fax. +82-55-321-0573

E-mail: shico@shico.co.kr Homepage: <http://www.shico.co.kr>

B-36

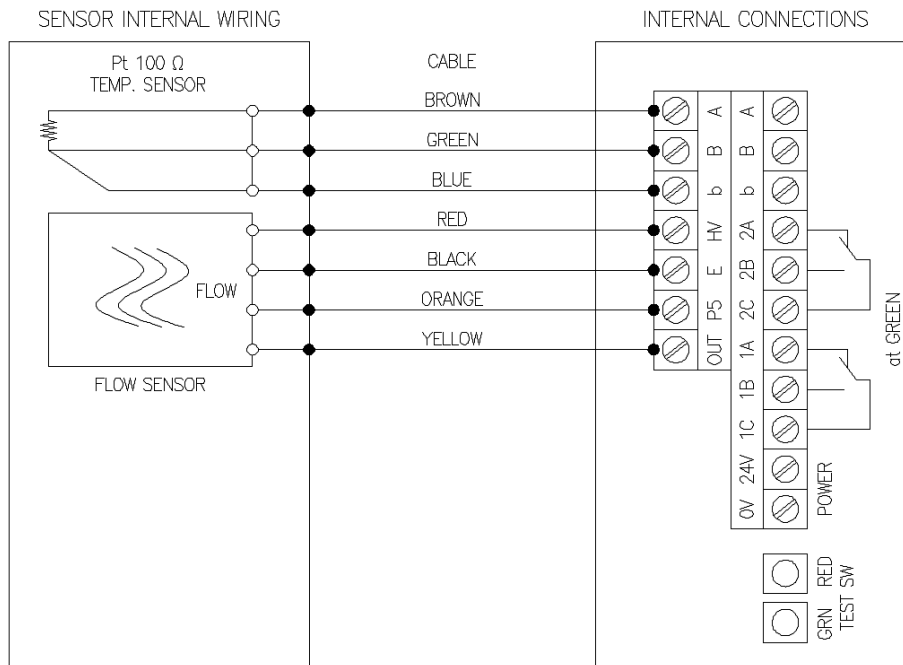
SHICO. COMBINED PCO NON FLOW SWITCH

MODEL : SVFLST Series

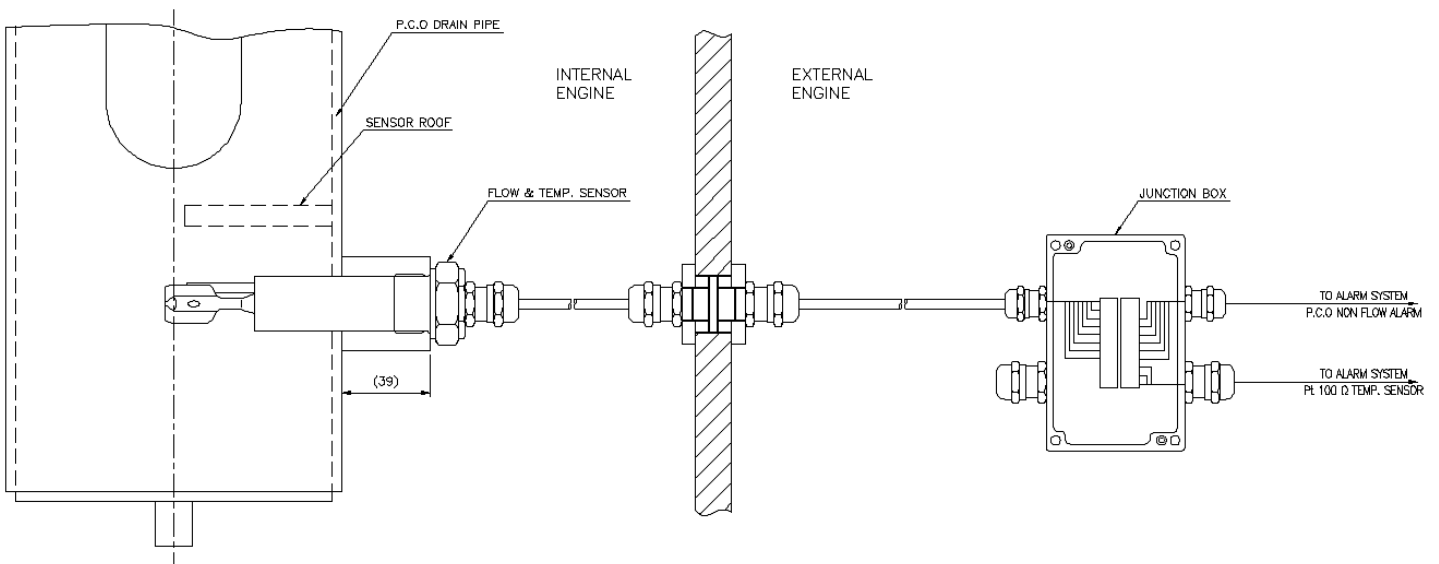
(VIBRATION & TEMPERATURE OUTPUT)

ELECTRICAL CONNECTION

- Flow & Temp sensor to Combined AMP Box wiring connection



- Flow & Temp sensor to Combined AMP Box connection diagram



SAM HOI INDUSTRIAL CO., LTD.

#48-2, 66-BeonGil, Golden root-Ro, Juchon Myeon, Gimhae-city
Gyeongnam-do. Korea

Tel. + 82-55-321-0578~9 Fax. + 82-55-321-0573

E-mail: shico@shico.co.kr Homepage: <http://www.shico.co.kr>

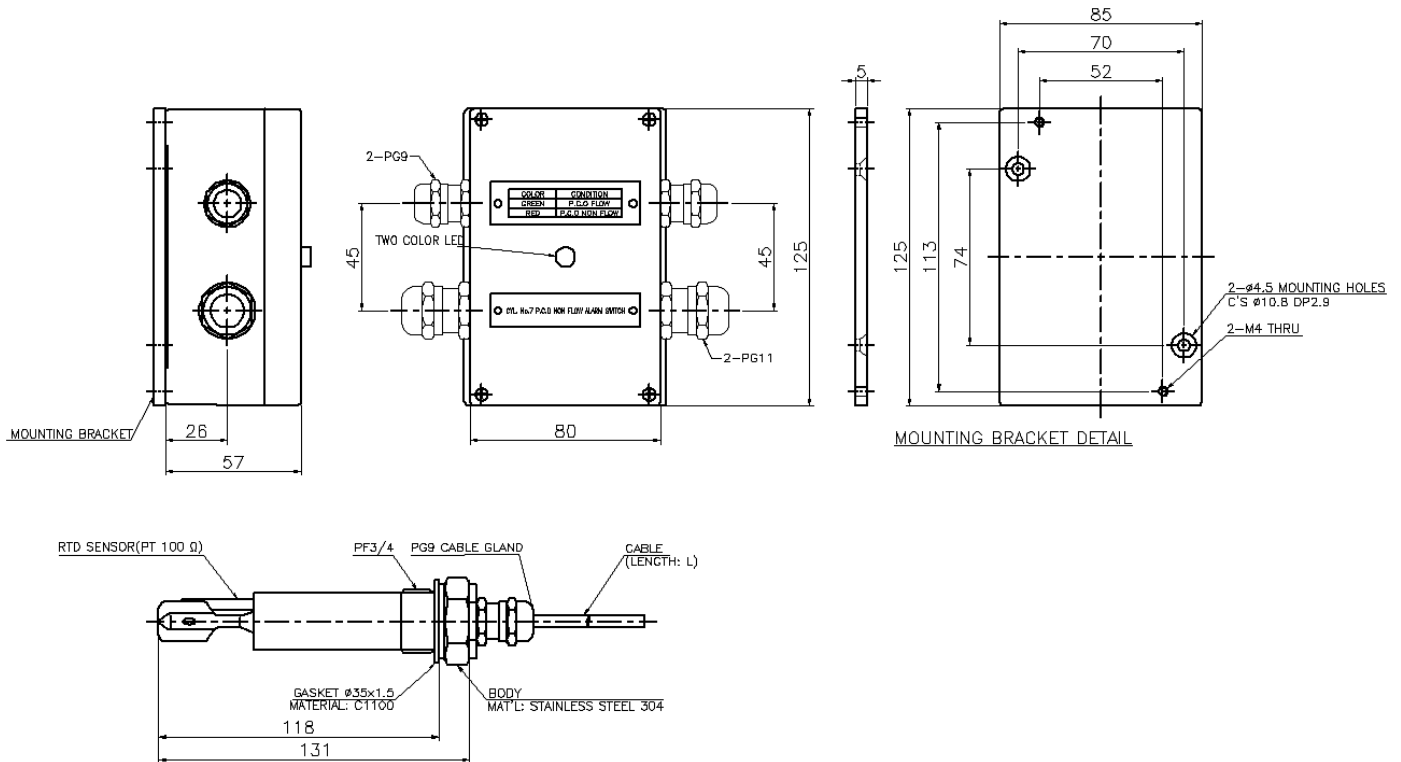
B-37

SHICO. COMBINED PCO NON FLOW SWITCH

MODEL : SVFLST Series

(VIBRATION & TEMPERATURE OUTPUT)

DIMENSION



ORDERING INFORMATION

CODE	CONNECTION
1	PF3/4"
2	PF1"
3	USER CONNECTION REQUEST.

CODE	SENSOR LENGTH
1	5M (STANDARD)
2	OTHER LENGTH IS USER REQUEST.

SVFLST -



SAM HOI INDUSTRIAL CO., LTD.

#48-2, 66-BeonGil, Golden root-Ro, Juchon Myeon, Gimhae-city
Gyeongnam-do. Korea

Tel. + 82-55-321-0578~9 Fax. + 82-55-321-0573

E-mail: shico@shico.co.kr Homepage: <http://www.shico.co.kr>

B-38